

Monthly Weather Summary in Thailand September 2014

September was dominated by southwest monsoons almost the whole month and monsoon trough which lay across upper Thailand during early and late month, with the remnants of Typhoon “KALMAEGI (1415)” during middle of the month. This meant that periodically fairly widespread rainfall was in upper Thailand mainly during early and late month with flash flood and landslide in some areas. For southern Thailand, abundant rainfall occurred almost the whole month with heavy to very heavy rainfall in some areas mainly in the west coast. However the total rainfall over Thailand was 9 percent lower than normal with below normal in most parts of Thailand i.e. northern part 44.9 mm (21%), central part 60.7 mm (24%), eastern part 4.8 mm (1%) and southern part (east coast) 39.1 mm (26%) except for above normal in northeastern part 4.2 mm (2%) and southern part (west coast) 14.5 mm (3%). Mean temperatures were above normal in all parts.

1 – 10 September: The monsoon trough lay across the northern and northeastern parts during early period after that it strengthened and laid toward the low pressure cell in the middle South China Sea. During late period, the monsoon trough was weakened and moved northward to lie across Myanmar, Lao and upper Vietnam. In addition, the moderate southwest monsoon prevailed over the Andaman Sea, Thailand and the Gulf of Thailand during the second half of the period. These caused abundant rainfall in upper Thailand during early and middle period with heavy rainfall in several areas and very heavy rainfall in some areas. The highest daily rainfall of 186.2 mm was measured at Amphoe Khlong Yai, Trat province on September 6. Flash floods occurred at Phitsanulok, Phayao, Nakhon Sawan, Nan, Lampang, Phetchabun, Chanthaburi and Trat provinces as well as Chaiyaphum, Tak and Sukhothai provinces experienced flooding on September 1, 2 and 4, respectively. Moreover, landslide occurred at Chaing Rai province on September 6. In southern Thailand, scattered to fairly widespread rain almost the whole period and heavy rainfall occurred in several areas with very heavy rainfall in some areas mainly in west coast during late period. The maximum daily rainfall was 133.9 mm at Amphoe Ko Lanta, Krabi province on September 9. Flash floods occurred at Ranong and Krabi provinces on September 9.

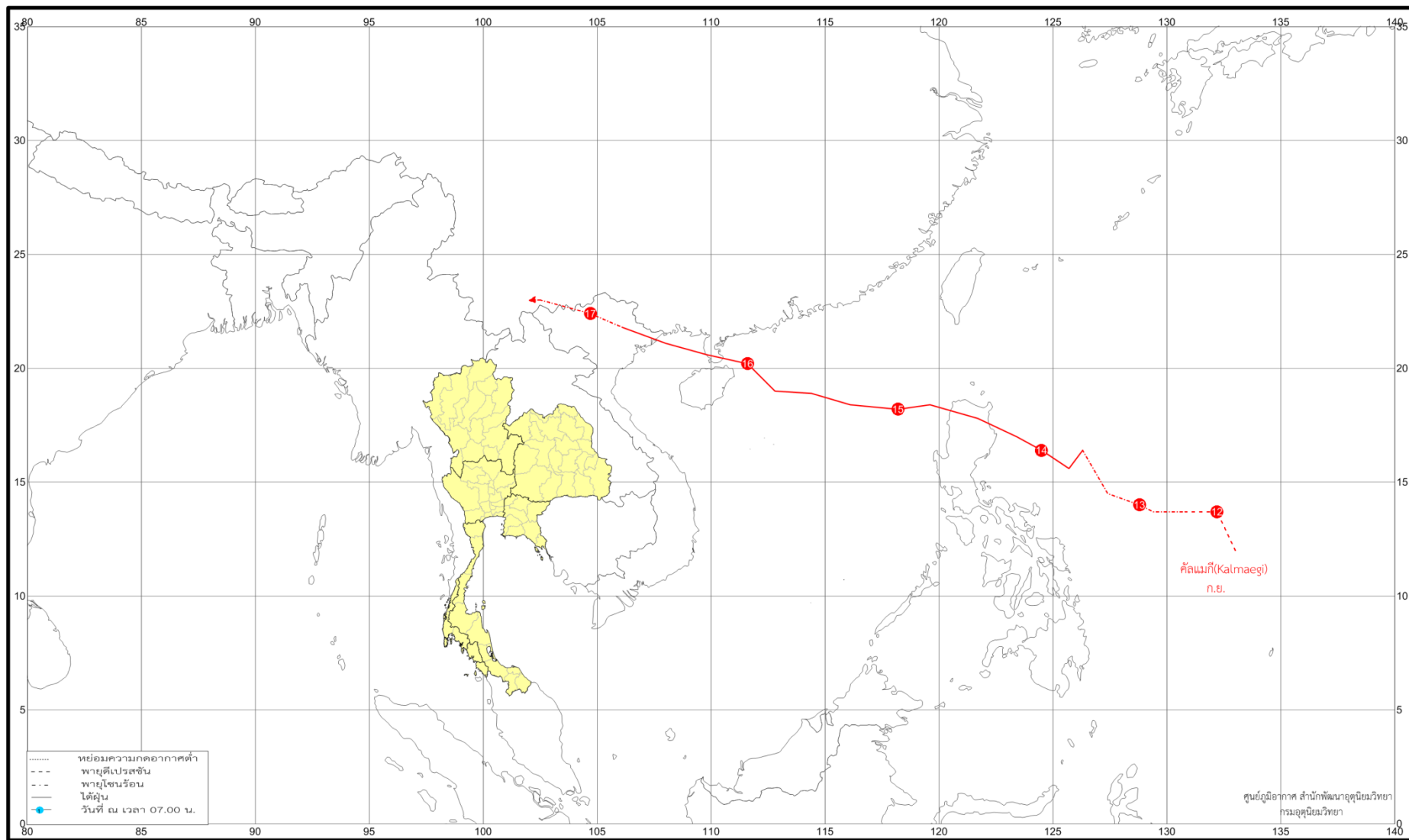
11 – 20 September: The weak monsoon trough moved southward to lie across the lower northern, upper central and lower northeastern parts toward the low pressure cell in the middle South China Sea on the first day of the period, after that it moved northward and was nonexistent. In addition with the moderate southwest monsoon which prevailing over the Andaman Sea, Thailand and the Gulf of Thailand was strengthened during the middle period. Meanwhile, typhoon “KALMAEGI (1415)” moved into Luzon of the Philippines and tracked generally west-northwestwards across the upper South China Sea to the Gulf of Tonkin before making landfall over the northern Vietnam at night of September 16. KALMAEGI moved further inland and finally became an area of low pressure over Yunnan of China and dominated upper Lao and Myanmar on September 18. Under these influences, upper Thailand experienced widely scattered to scattered rain almost the whole period with heavy to very heavy rainfall in some areas especially fairly

widespread rain with heavy to very heavy rainfall in some places mainly in central and eastern parts. The maximum daily rainfall in upper Thailand was 256.0 mm at Na Haeo in Loei province on September 20. Flooding occurred at Prachin Buri province on September 14 and Kalasin province on September 17. There were also reports of flash flood at Chiang Rai and Chaiyaphum provinces on September 17 and 18, respectively. For southern Thailand, abundant rainfall occurred during early and middle period especially heavy rainfall in several places and very heavy rainfall in some areas of the west coast. The maximum daily rainfall was 148.7 mm at Amphoe Mueang, Ranong province on September 16.

21 – 30 September: The monsoon trough lay across the northern and northeastern parts to the low pressure cell which located in the coast of Vietnam during the first half of the period. After that the monsoon trough moved southward to lie across the lower northern, upper central and lower northeastern parts. In addition, the southwest monsoon prevailed over the Andaman Sea and the Gulf of Thailand during late period. The high pressure area from China extended its ridge to cover northern and northeastern parts on September 25 and 30. The combined effect of these conditions brought plentiful rain to upper Thailand almost the period. The highest daily rainfall of 251.4 mm was measured at Kaeng Khro in Chaiyaphum province on September 24. Flooding reported at Maha Sarakham province on September 25 and Gusty wind at Roi Et province on September 28. In southern Thailand, scattered to fairly widespread rain was found with heavy to very rainfall in some areas throughout the period with the maximum daily rainfall, 104.0 mm at Hat Yai Agricultural Extension Office in Songkhla province on September 30.

Note : Rainfall, temperatures and natural disasters in this report were updated up to October 3, 2014.

Climatological Center
Meteorological Development Bureau
Meteorological Department



Track of Typhoon Kalmaegi (1415) during September 2014

Monthly Current Report
Rainfall and Accumulative Rainfall
September 2014

Northern Thailand

Station	Temperature (°c)		Rainfall (mm)		Accumulative rainfall (mm) Since 1 January	
	Mean	Above or below normal	Actual	Above or below normal	Actual	Above or below normal
Chiang Rai	26.8	0.6	355.3	71.4	1528.7	36.3
Mae Hong Son	27.6	0.6	80.7	-118.3	917.4	-205.2
Phayao	26.9	0.6	209.3	5.7	976.5	10.3
Chiang Mai	27.6	0.9	177.5	-33.9	929.6	-13.6
Tha Wang Pha	27.3	0.5	167.5	-44.0	1061.9	-224.2
Nan	27.6	0.4	193.8	-9.7	1038.6	-98.5
Lamphun	27.6	0.7	108.0	-100.2	689.3	-152.9
Lampang	27.6	0.6	169.0	-42.6	1003.6	92.9
Mae Sariang	27.2	0.7	86.8	-90.3	836.9	-154.0
Phrae	27.7	0.5	144.7	-47.0	982.3	-10.3
Uttaradit	28.6	0.6	136.4	-111.9	1283.9	55.0
Bhumibol Dam	28.6	1.1	165.2	-42.4	731.8	-55.3
Tak	28.7	1.0	150.6	-64.9	680.0	-122.2
Mae Sot	26.6	0.4	125.9	-59.5	950.6	-385.3
Umphang	24.8	0.4	219.5	-28.1	995.5	-279.7
Phitsanulok	28.4	0.3	221.1	-25.5	1035.0	-75.0
Lom Sak	27.6	0.5	106.7	-86.9	624.3	-311.9
Phetchabun	27.6	0.5	176.3	-29.4	1072.7	49.1
Wichian Buri	28.2	0.3	229.9	-16.2	990.7	-73.7
Kamphaeng Phet	28.2	0.6	243.6	-25.2	1144.0	79.8
Over the area	27.6	0.6	173.4	-44.9 -21%	973.7	-92.0 -9%

Northeastern Thailand

Station	Temperature (°c)		Rainfall (mm)		Accumulative rainfall (mm) Since 1 January	
	Mean	Above or below normal	Actual	Above or below normal	Actual	Above or below normal
Nong Khai	28.3	0.9	282.2	25.0	1556.9	59.1
Loei	27.2	0.8	64.0	-171.0	848.9	-240.0
Udon Thani	28.0	0.4	338.3	98.8	1339.5	24.4
Nakhon Phanom	27.7	0.6	181.5	-108.7	2386.5	151.2
Sakon Nakhon	27.4	0.2	284.5	59.7	1636.2	85.6
Mukdahan	27.7	0.5	261.0	49.3	1429.6	66.1
Khon Kaen	27.4	0.2	257.9	25.9	946.7	-162.4
Kosum Phisai	28.2	0.5	436.2	195.6	1466.9	335.8
Roi Et	28.0	0.5	359.5	139.7	1352.1	134.7
Chaiyaphum	27.9	0.6	226.3	-3.7	714.2	-262.9
Ubon Ratchathani	27.8	0.4	223.7	-70.1	1816.7	381.7
Tha Tum	28.5	0.8	151.8	-111.2	1041.4	-198.2
Surin	27.8	0.5	162.7	-92.7	1128.9	-144.5
Nakhon Ratchasima	27.9	0.5	269.2	40.9	978.3	79.7
Chok Chai	27.6	0.3	231.7	20.1	671.5	-206.4
Nang Rong	27.6	0.4	209.4	-30.2	1105.3	85.9
Over the area	27.8	0.5	246.2	4.2 2%	1276.2	11.8 1%

- NOTES :
- 1) Mean temperature is the average of daily dry-bulb temperature
 - 2) "T" is trace, rainfall amount less than 0.1 mm.
 - 3) "blank" is incomplete data.
 - 4) Temperature and rainfall are preliminary data.

Monthly Current Report
Rainfall and Accumulative Rainfall
September 2014

Central Thailand

Station	Temperature (°c)		Rainfall (mm)		Accumulative rainfall (mm) Since 1 January	
	Mean	Above or below normal	Actual	Above or below normal	Actual	Above or below normal
Nakhon Sawan	28.5	0.5	130.7	-106.3	941.4	-22.9
Bua Chum	28.0	0.4	242.8	-8.9	799.7	-133.7
Lop Buri	28.4	0.4	225.0	-40.5	748.5	-185.3
Suphan Buri	29.0	0.7	291.7	68.3	683.6	-44.3
Thong Pha Phum	27.1	0.4	130.2	-111.0	1175.5	-408.4
Kanchanaburi	29.2	1.2	153.6	-66.9	585.2	-197.2
Bangkok Airport	28.9	0.5	210.5	-74.4	1057.7	-82.2
Bangkok Metropolis	28.9	0.6	188.0	-146.3	859.0	-441.3
Over the area	28.5	0.6	196.6	-60.7 -24%	856.3	-189.4 -18%

Eastern Thailand

Station	Temperature (°c)		Rainfall (mm)		Accumulative rainfall (mm) Since 1 January	
	Mean	Above or below normal	Actual	Above or below normal	Actual	Above or below normal
Prachin Buri	28.7	0.6	380.8	31.4	1258.5	-367.2
Kabin Buri	28.0	0.3	179.5	-123.8	1141.1	-268.2
Aranyaprathet	28.1	0.4	291.1	38.8	1214.5	84.2
Chon Buri	29.0	0.7	232.7	-36.2	809.3	-223.1
Ko Sichang	28.5	0.4	248.0	-21.2	680.9	-261.8
Pattaya	28.3	0.6	139.9	-64.8	410.8	-403.4
Sattahip	28.6	0.5	55.4	-163.6	534.2	-386.0
Rayong	28.5	0.3	108.3	-146.9	527.2	-604.9
Chanthaburi	27.5	0.3	723.8	226.2	2455.2	-180.1
Khlong Yai	27.2	0.3	893.3	212.3	4863.8	490.3
Over the area	28.2	0.4	325.3	-4.8 -1%	1389.6	-212.1 -13%

- NOTES :
- 1) Mean temperature is the average of daily dry-bulb temperature
 - 2) "T" is trace, rainfall amount less than 0.1 mm.
 - 3) "blank" is incomplete data.
 - 4) Temperature and rainfall are preliminary data.

Monthly Current Report
Rainfall and Accumulative Rainfall
September 2014

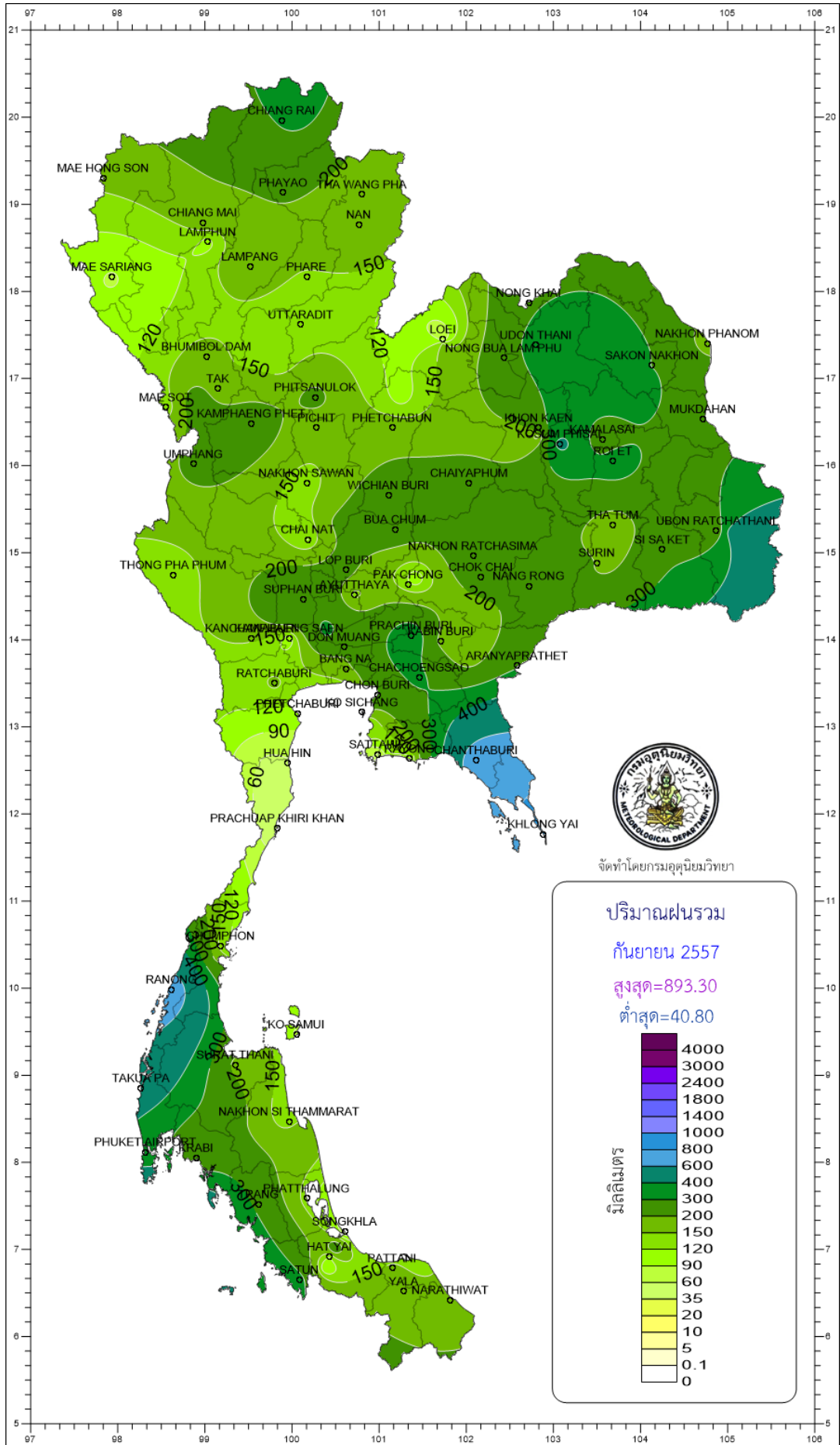
Southern Thailand, east coast

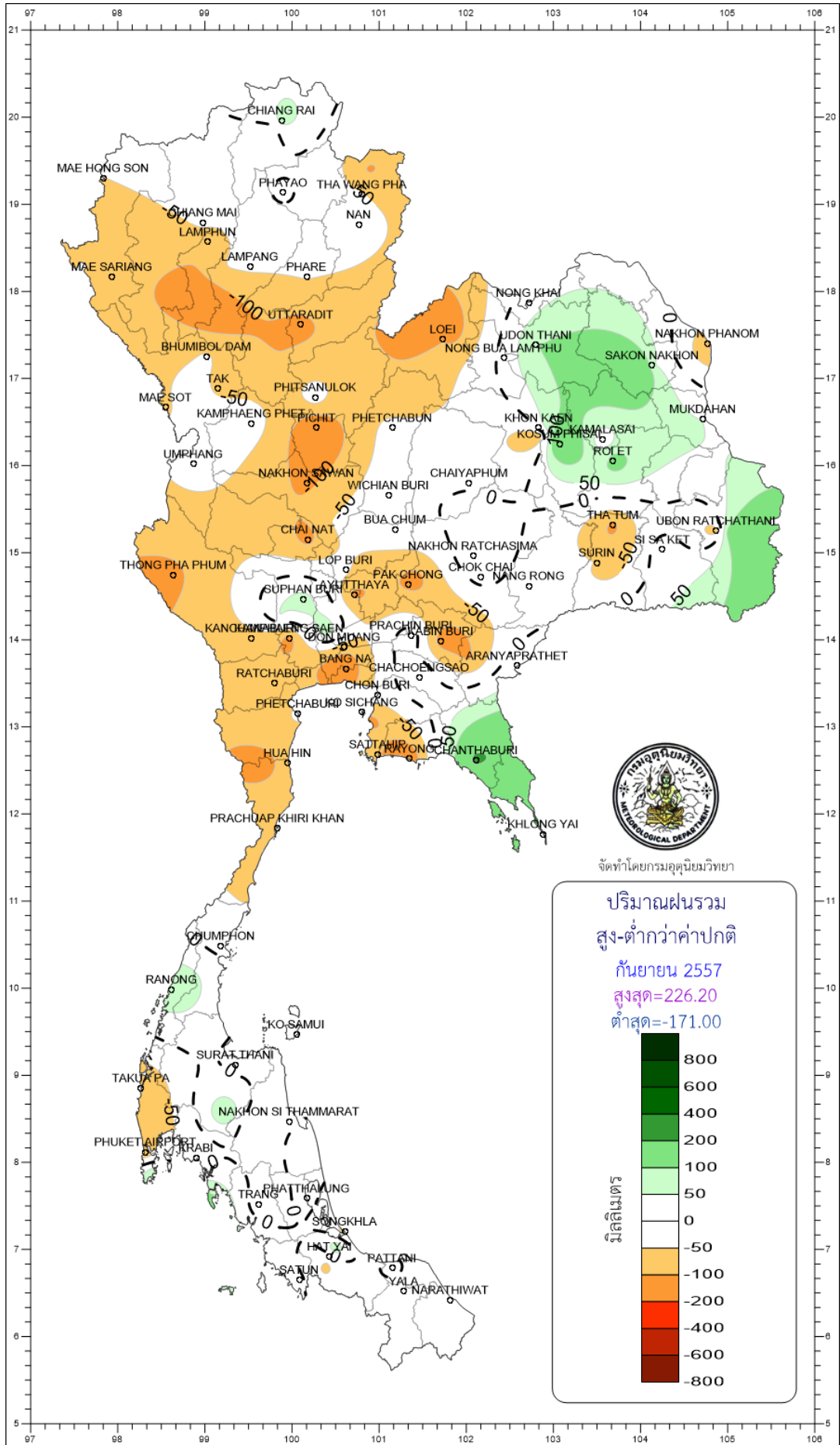
Station	Temperature (°c)		Rainfall (mm)		Accumulative rainfall (mm) Since 1 January	
	Mean	Above or below normal	Actual	Above or below normal	Actual	Above or below normal
Phetchaburi	28.6	0.4	109.0	-44.6	439.2	-164.3
Hua Hin	28.5	0.5	56.6	-63.8	241.2	-358.6
Prachuap Khiri Khan	28.4	0.7	40.8	-58.7	447.2	-247.3
Chumphon	27.2	0.3	137.2	-41.1	996.6	-213.3
Surat Thani	27.1	0.5	177.6	-10.8	816.2	-110.1
Ko Samui	28.0	0.1	84.3	-37.4	591.6	-341.8
Nakhon Si Thammarat	27.3	0.0	123.3	-38.3	923.0	-187.6
Songkhla	28.2	0.3	57.0	-79.9	706.6	-112.4
Hat Yai Airport	26.8	-0.1	120.6	-36.7	649.3	-264.4
Pattani Airport	27.4	0.2	156.0	8.9	874.9	10.9
Narathiwat	27.5	0.3	155.3	-27.4	886.7	-199.1
Over the area	27.7	0.3	110.7	-39.1 -26%	688.4	-199.1 -22%

Southern Thailand, west coast

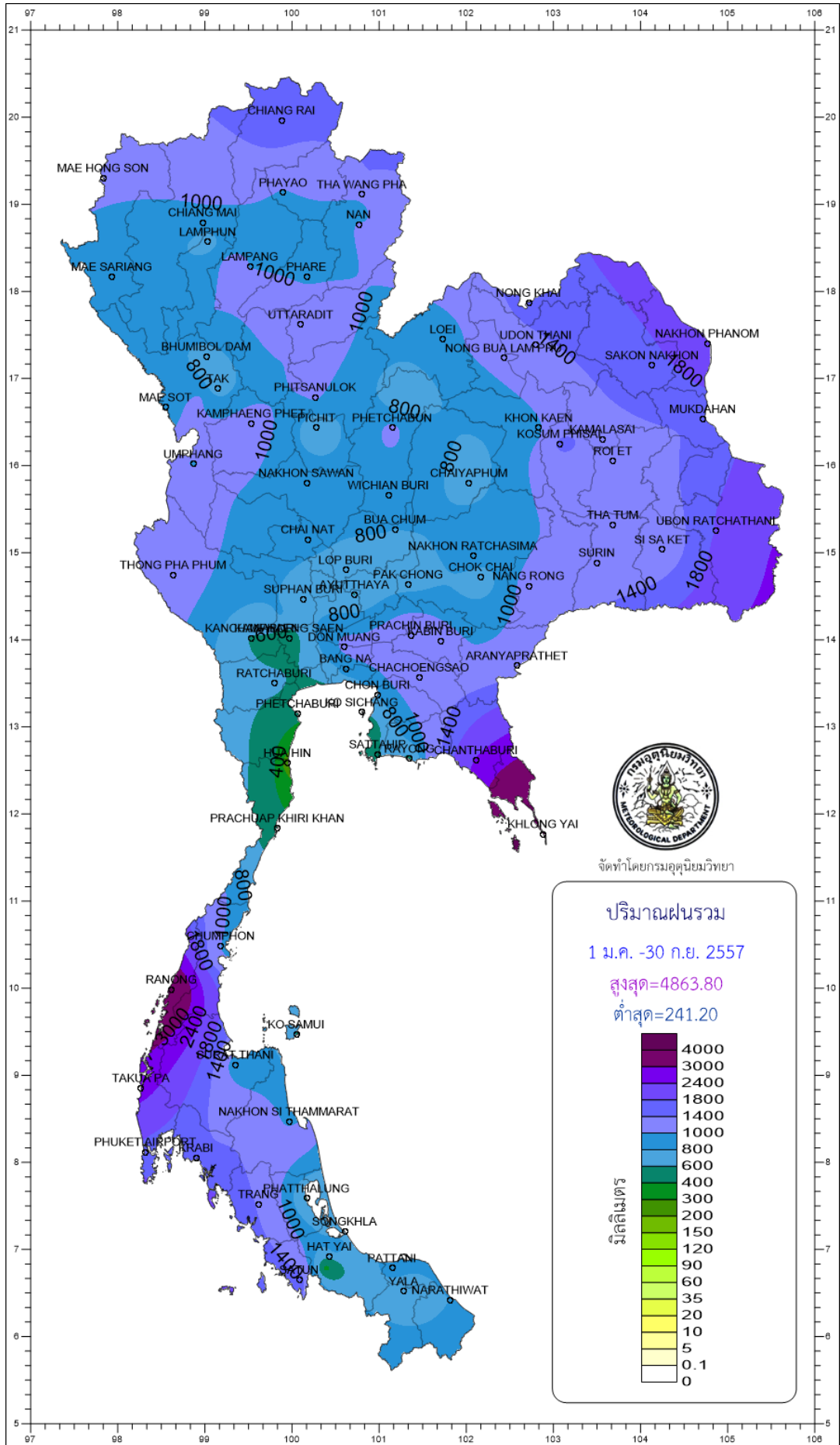
Station	Temperature (°c)		Rainfall (mm)		Accumulative rainfall (mm) Since 1 January	
	Mean	Above or below normal	Actual	Above or below normal	Actual	Above or below normal
Ranong	26.6	0.2	736.6	90.1	4114.0	667.9
Takua Pa	26.8	0.1	494.9	-100.6	2659.6	-177.6
Phuket	28.0	0.5	444.2	83.0	1753.0	103.4
Phuket Airport	28.1	0.8	307.1	-92.0	1624.7	-221.7
Ko Lanta	28.0	0.4	470.3	140.0	1963.8	315.3
Trang Airport	27.2	0.6	274.8	-30.3	1355.4	-178.3
Satun	27.3	0.4	339.8	11.4	1582.2	-47.9
Over the area	27.4	0.4	438.2	14.5 3%	2150.4	65.9 3%

- NOTES :
- 1) Mean temperature is the average of daily dry-bulb temperature
 - 2) "T" is trace, rainfall amount less than 0.1 mm.
 - 3) "blank" is incomplete data.
 - 4) Temperature and rainfall are preliminary data.

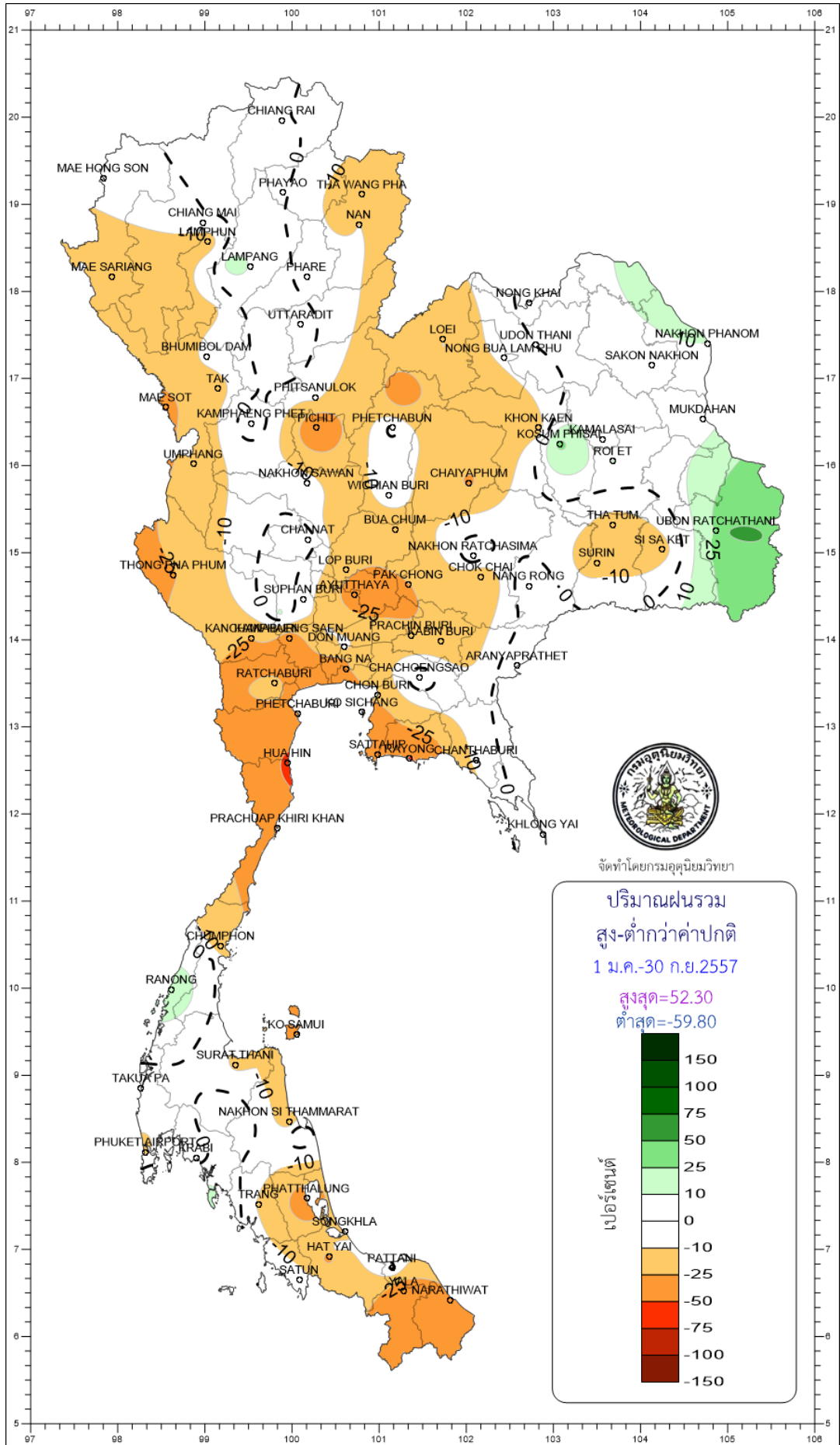




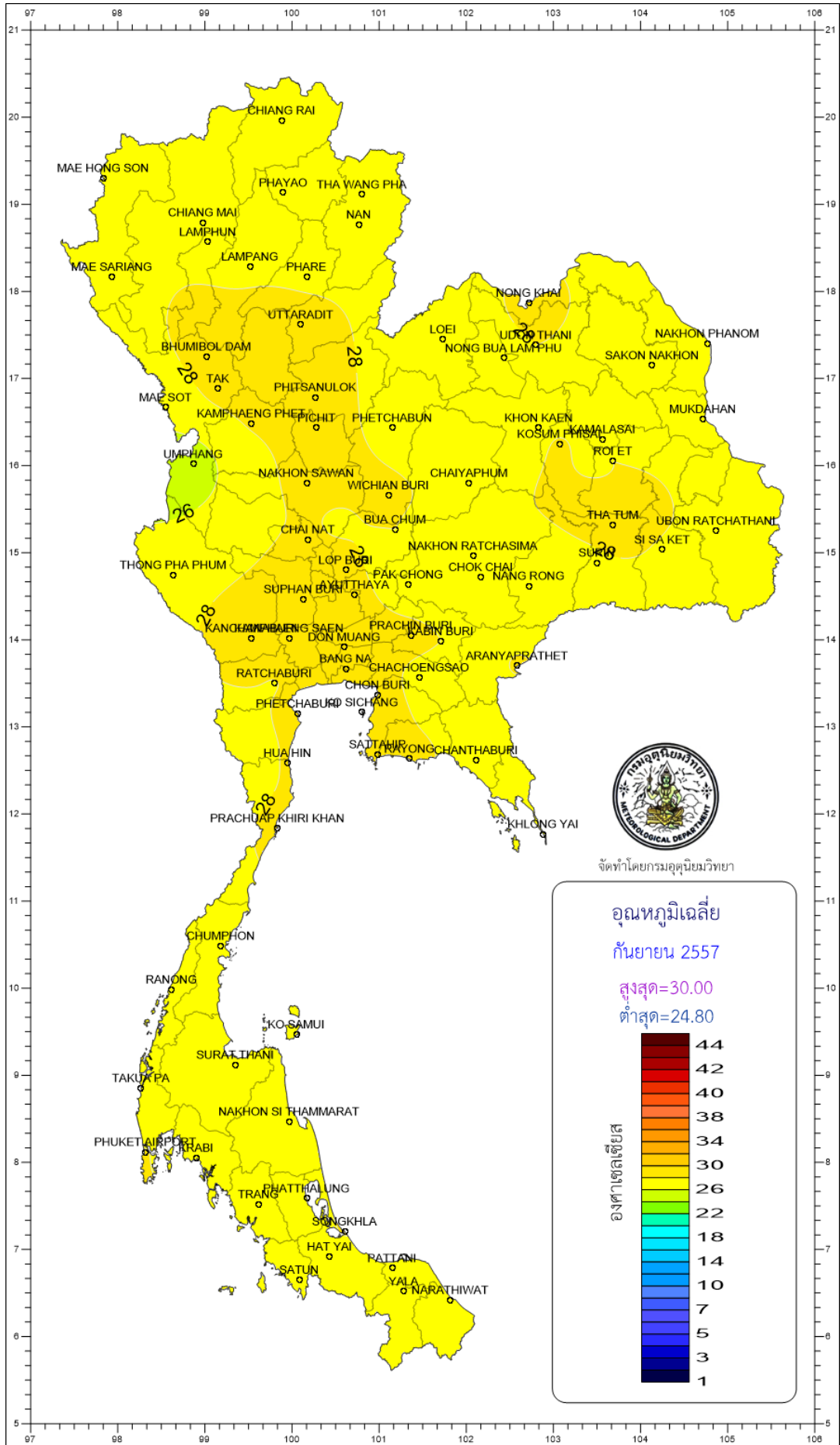
จัดทำโดยกรมอุตุนิยมวิทยา



จัดทำโดยกรมอุตุนิยมวิทยา



จัดทำโดยกรมอุตุนิยมวิทยา



จัดทำโดยกรมอุตุนิยมวิทยา

